

evo²

ELECTRIC
LITHIUM
PETROL
DIESEL



Snow tank volume

4.1 m³ / compacted 5.1 m³
(145 ft³ / compacted 180 ft³)



Water tank volume

1,200 l or 1,400 l or 2,000 l
(317 gal or 370 gal or 528 gal)
+ Snow tank-water tank connection
2,550 l or 2,750 l
(673 gal or 726 gal)



Blade width

2,300 mm (90 1/2 in)
or 2,500 mm (98 1/2 in)
Blade change < 60 seconds



Fields of operations

Pro / Heavy duty



HIGH PERFORMANCE FOR LARGE-SCALE OPERATIONS

Powerful drive with diesel, petrol or electric engines together with a large snow and water tank capacity: The WM evo² has been purpose-designed for re-surfacing large stadiums and ice rings. Technically sophisticated, with a quick blade-change system and numerous extras, the WM evo² is the perfect partner for professional resurfacing of ice surfaces over 4,200 m² (45,192 ft²).

„Our arena is a training centre for international teams and a venue for major sporting events. Perfect ice quality is an absolute must! With the WM evo², I can guarantee perfect ice rinks.“



Toni Doppler

Ice expert at the Max Aicher Arena
Inzell / Germany



HIGHLIGHT

EVERYTHING UNDER CONTROL IN THE DRIVER'S CAB

The WM evo² is a guarantee of outstanding comfort for the driver and boasts a full, unobstructed view whether you're driving cabin-free or with all-round glazing. Three steps provide easy entry to the vehicle. All important information is clearly visible at a glance on the high-definition colour display, and all the main functions are keyboard-controlled. At a simple press of a button the automatic mode begins all work operations in a pre-defined order, while the height-adjustable Grammer suspension seat provides outstanding comfort.





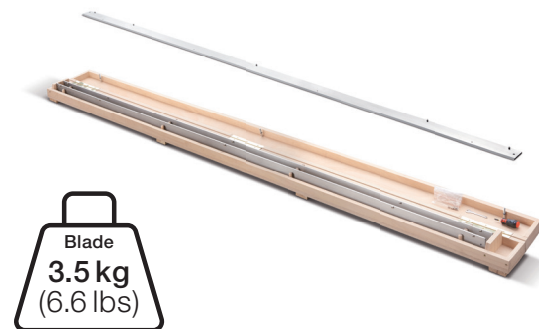




HIGHLIGHT

ULTRA-LIGHT BLADES, CHANGED IN 60 SECONDS

The WM evo² quick blade-change system eases working life enormously: Blades can be changed in just 60 seconds! The blades are made in a special steel, giving you both an above-average service life and an impressive weight: They are just 3.5 kilos (6.6 lbs). Blade changes can be carried out quickly and safely. Two blades together with all accessory equipment are supplied as standard in a practical wooden transport box.



EASY, QUICK AND PRECISE +

LOW INJURY RISK +

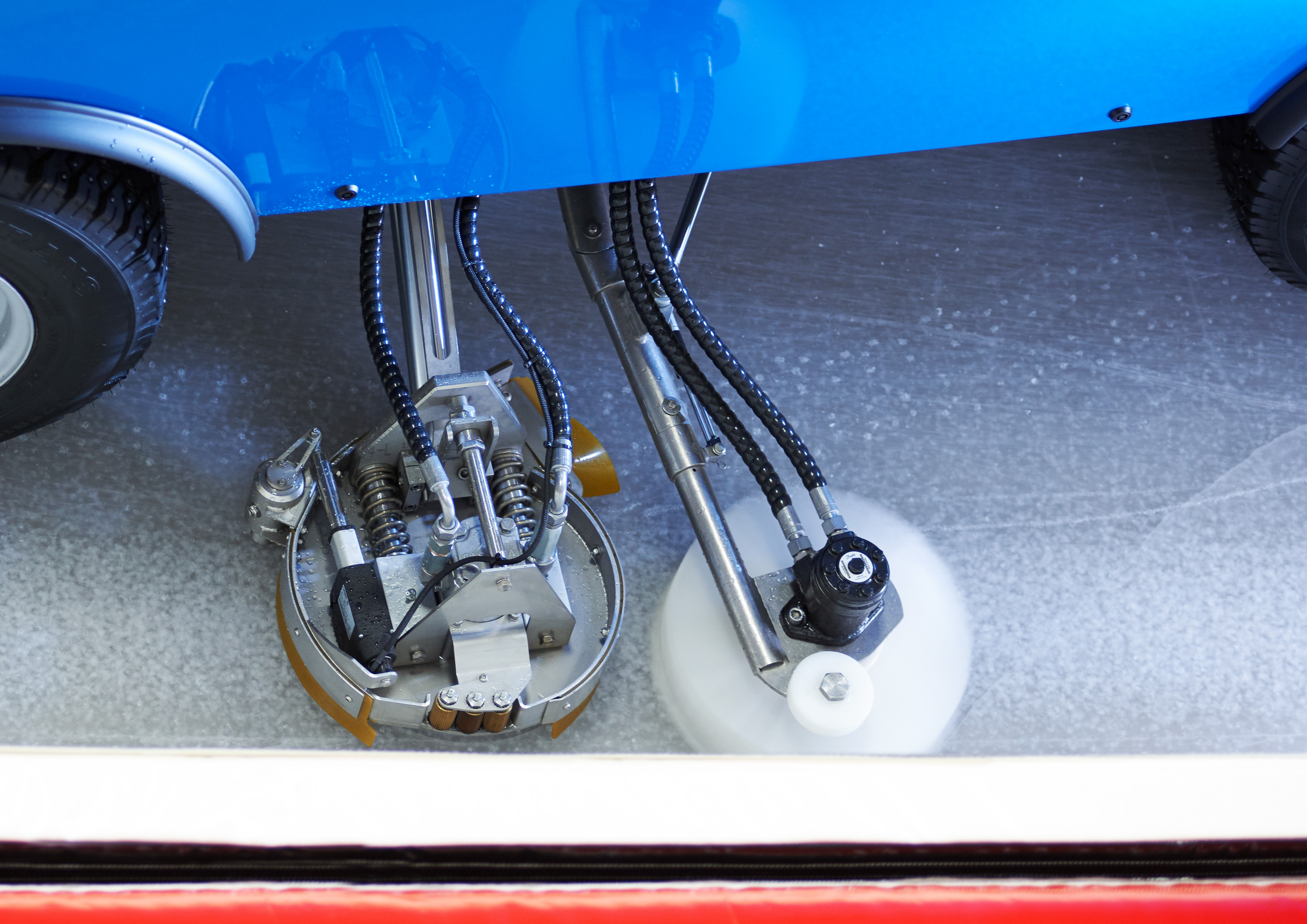
IMPROVED QUALITY OF ICE +

HIGHLIGHT

INTEGRATED EDGER FOR END-TO-END RINK PERFECTION

The edger is fixed to the body of the WM evo², guaranteeing you outstanding stability and performance. It can be operated easily and safely from the driver's seat. The innovative horizontal spring-loaded system with guide wheel ensures that the edger follows the contours of the rink to perfection, and planes the ice evenly, rapidly and cleanly. Edging and subsequent cleaning of the ice surface with the swivel brushes can be carried out in one simple step. The edgers are positioned between the axels and in front of the brush, to ensure an unrestricted overview of the vehicle. When not in use, the edgers are stored between the wheels, and do not affect operation in any way.





HIGHLIGHT

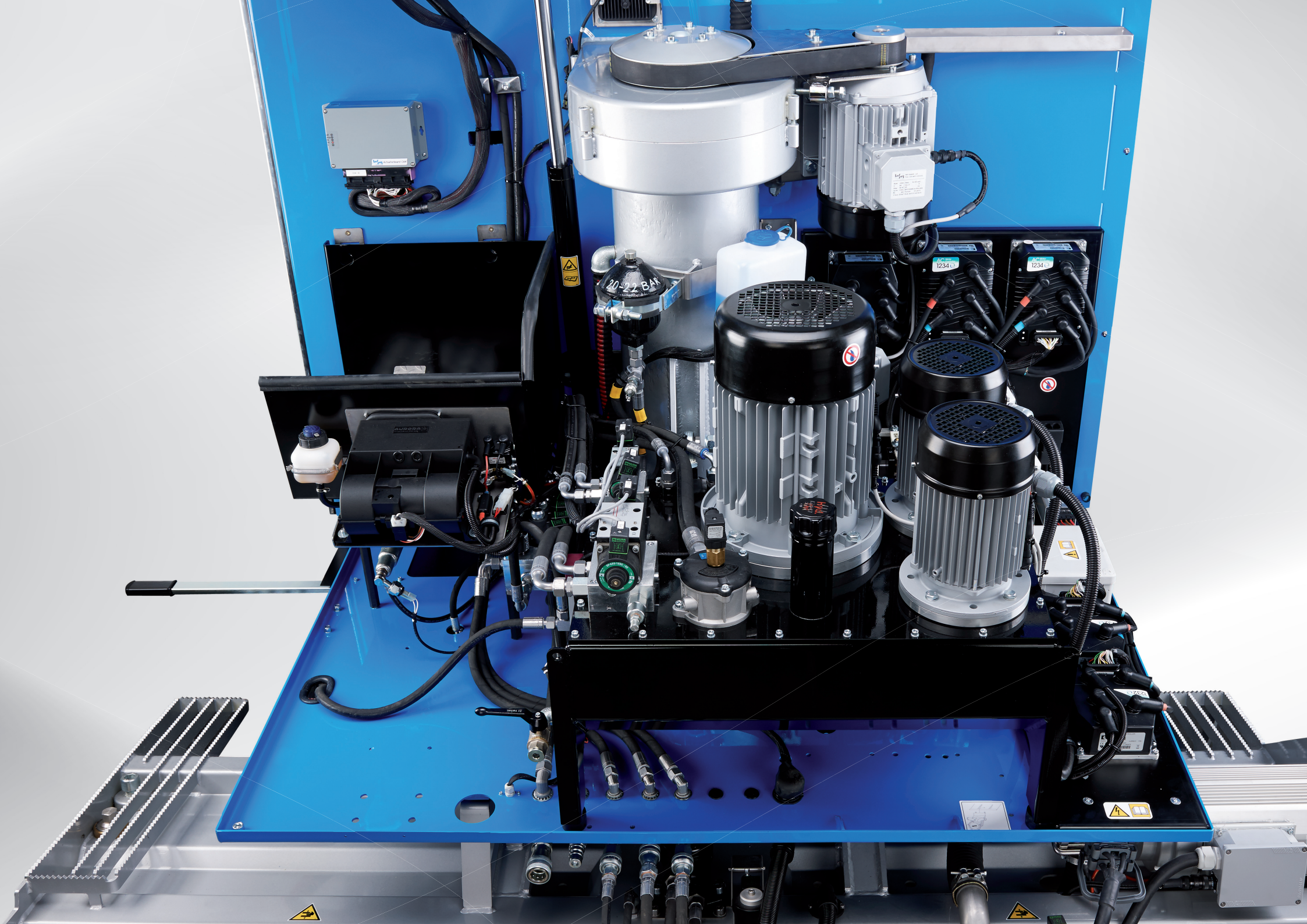
NEED MORE THAN 2,500 LITRES (674 GAL) OF WATER? NO PROBLEM!

When you're building up ice depth or using the water sprayer, more water is a must. The WM evo² has it all taken care of! The water and snow tanks can easily be connected into one water tank with a total volume of around 2,550 litres (674 gal) of water. No more standing in cold water and tiresome tugging on hoses: All operations can be carried out from the comfort of the driver's cab – there's more than enough water to do the job.

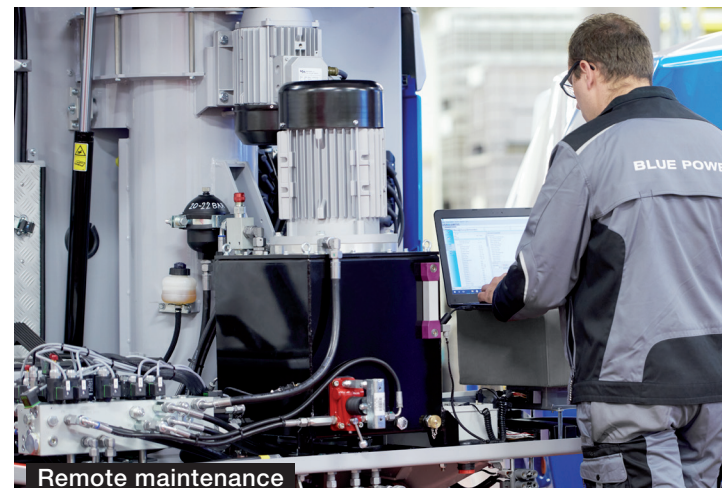
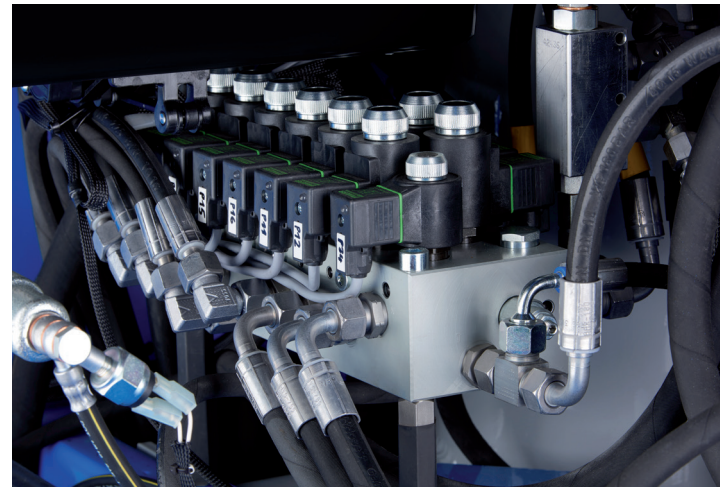
Example: 1,400-litre (370 gal) water tank & 1,350-litre (356 gal) snow tank = 2,750 litres (726 gal) of water







MAINTENANCE



The entire engine technology is easily accessible just by lifting the cab. This means that mechanics can carry out their work quickly and cleanly, which in turn saves on time and service costs. Our team also use remote monitoring to keep an eye on your vehicle monitor and rectify any faults which may occur.

COST EFFICIENT +

FREE AND EASY ACCESS +

SKILLED REMOTE MAINTENANCE +

ELECTRIC / LITHIUM



FACTS & FIGURES

Motor	7 asynchronous motors
Total power	33 kW
Water tank	1,200 l (317 gal) optional 1,400 l (370 gal) or 2,000 l (528 gal)
Snow tank	4.1 m³ (145 ft³) - compacted 5.1 m³ (180 ft³)
Transmission	Continuously adjustable electric all-wheel drive
Hydraulic oil tank	50 l (13.2 gal)
Speed	0 - 13 km/h (0 - 8 mph)
Tyres	225 / 75 / R16 C 6 rows of spikes
Wheel rims	8" x 16"

INCLUDED IN DELIVERY



2 blades in wooden
transport box



2 towels



2 rubber mats



Adjustment tool



Key for water filter



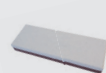
1 set hexagonal socket
screws



2 Bodywork keys
7 mm + 8 mm



Laceration-proof
safety gloves



Grindstone



Storz coupling C
with nozzles
ø 32, ø 40, ø 50



Fuse set



Operating instructions



Online spare
parts catalogue

STANDARD EQUIPMENT

Cab with heated windshield in safety glass,
 windscreen wiper system and interior light
 PLC control
 7 inch colour display
 USB port for installing updates and data exchange
 Button for automatic mode: Operations start
 automatically in a predefined order
 Spring-suspended and height-adjustable
 driver's seat (fabric)
 Armrest with storage capacity
 Power steering
 Easily-accessible engine compartment (tiltable)
 with cab support
 Maintenance-free asynchronous motors
 Water tank made of PE
 Snow bin & water tank connection
 > 2.550 litres (> 660 gal)
 Function for automatic water filling system with
 immobilizer (Acquastop valve as optional)
 Coated snow tank

Footbrake and parking brake
 Hydraulically driven and swivelling side brush
 Board guide pulley
 Side mirror, rear
 Front headlights, snow bin headlight, side headlight
 Flashing warning light
 Acoustic signal for reverse drive, snow bin cover
 operation, reverse of the screw conveyors and blade
 exchange
 Proportional water metering
 System for water dosing in curves
 Planing system made of stainless steel
 Constant grinding pressure planing system
 Quick-Change-System for fast blade replacement
 (< 60 seconds)
 2 blades in wooden transport box
 (super-light blade - 3.5 kg (6.6 lbs))
 2 towels
 Scope of delivery-set



suva
CERTIFICATION

In compliance with Suva certification
no. E 7139/1.e



Snow tank volume

4.1 m³ / compacted 5.1 m³
(145 ft³ / compacted 180 ft³)



Water tank volume

1,200 l (317 gal)
or 1,400 l (370 gal)
or 2,000 l (528 gal)



Blade width

2,300 mm (90 1/2 in)
or 2,500 mm (98 1/2 in)



Fields of operations

Pro / Heavy duty

PETROL



FACTS & FIGURES

Engine	Ford MSG 425 - 2,500 cm ³ (152.5 in ³)
Power	51.5 kW / 70 HP - 2,600 rpm
Torque	190 Nm (140 lb-ft) - 2,600 rpm
Unloaded weight	3,750 kg (8,267 lbs) – basic outfit
Water tank	1,450 l (383 gal) optional 1,600 l (423 gal) or 2,200 l (581 gal)
Snow tank	4.1 m ³ (145 ft ³) – compacted 5.1 m ³ (180 ft ³)
Transmission	Continuously adjustable hydraulic all-wheel drive
Fuel tank	52 l (13.7 gal)
Hydraulic oil tank	65 l (17.1 gal)
Speed	0 - 16 km/h (0 - 10 mph)
Tyres	225 / 75 / R16 C 6 rows of spikes
Wheel rims	8" x 16"

INCLUDED IN DELIVERY



2 blades in wooden transport box



2 towels



2 rubber mats



Adjustment tool



Key for water filter



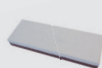
1 set hexagonal socket screws



2 bodywork keys
7 mm + 8 mm



Laceration-proof safety gloves



Grindstone



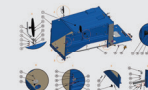
Storz coupling C with nozzles
ø 32 mm, ø 40 mm, ø 50 mm
(ø 1 1/4 in, ø 1 1/2 in, ø 2 in)



Fuse set



Operating instructions



Online spare parts catalogue

STANDARD EQUIPMENT

Cab with heated windshield in safety glass, windscreen wiper system and interior light
PLC control
7 inch colour display
USB port for installing updates and data exchange
Button for automatic mode: Operations start automatically in a predefined order
Spring-suspended and height-adjustable driver's seat (fabric)
Armrest with storage capacity
Power steering
Easily-accessible engine compartment (tiltable) with cab support
Hydraulic oil cooler
Water and fuel tank made of PE
Function for automatic water filling system with immobilizer (Acquastop valve as optional)
Coated snow tank
Snow bin & water tank connection > 2,800 l (> 740 gal)

Footbrake and parking brake
Hydraulically driven and swivelling side brush
Board guide pulley
Side mirror, rear
Front headlights, snow bin headlight, side headlight
Flashing warning light
Acoustic signal for reverse drive, snow bin cover operation, reverse of the screw conveyors and blade exchange
Proportional water metering
System for water dosing in curves
Planing system made of stainless steel
Constant grinding pressure planing system
Quick-Change-System for fast blade replacement (< 60 seconds)
2 blades in wooden transport box (super-light blade - 3.5 kg (6.6 lbs))
2 towels
Scope of delivery-set



In compliance with Suva certification
no. E 7139/1.e



Snow tank volume

4.1 m³ / compacted 5.1 m³
(145 ft³ / compacted 180 ft³)



Water tank volume

1,450 l (383 gal)
or 1,600 l (423 gal)
or 2,200 l (581 gal)



Blade width

2,300 mm (90 1/2 in)
or 2,500 mm (98 1/2 in)



Fields of operations

Pro / Heavy duty

DIESEL



Engine	Hatz 4H50TICD, 4 cylinder 1,952 cm ³ (119 in ³)
Power	55.4 kW / 74.3 HP - 2,800 rpm

FACTS & FIGURES

Torque	240 Nm (177 lb-ft) – 1,600 rpm
Exhaust gas treatment	DOC, DPF with EGR Emission Stage V / EPA Tier 4 final
Unloaded weight	3,750 kg (8,267 lbs) – basic outfit
Water tank	1,450 l (383 gal) optional 1,600 l (423 gal) or 2,200 l (581 gal)
Snow tank	4.1 m ³ (145 ft ³) – compacted 5.1 m ³ (180 ft ³)
Transmission	Continuously adjustable hydraulic all-wheel drive
Fuel tank	52 l (13.7 gal)
Hydraulic oil tank	65 l (17.1 gal)
Speed	0 - 16 km/h (0 - 10 mph)
Tyres	225 / 75 / R16 C 6 rows of spikes
Wheel rims	8" x 16"

INCLUDED IN DELIVERY



2 blades in wooden transport box



2 towels



2 rubber mats



Adjustment tool



Key for water filter



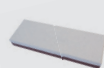
1 set hexagonal socket screws



2 bodywork keys
7 mm + 8 mm



Laceration-proof safety gloves



Grindstone



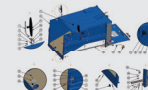
Storz coupling C with nozzles
ø 32 mm, ø 40 mm, ø 50 mm
(ø 1 1/4 in, ø 1 1/2 in, ø 2 in)



Fuse set



Operating instructions



Online spare parts catalogue

STANDARD EQUIPMENT

Cab with heated windshield in safety glass,
 windscreen wiper system and interior light
 PLC control
 7 inch colour display
 USB port for installing updates and data exchange
 Button for automatic mode: Operations start
 automatically in a predefined order
 Spring-suspended and height-adjustable driver's
 seat (fabric)
 Armrest with storage capacity
 Power steering
 Easily-accessible engine compartment (tiltable)
 with cab support
 Hydraulic oil cooler
 Water and fuel tank made of PE
 Function for automatic water filling system with
 immobilizer (Acquastop valve as optional)
 Coated snow tank
 Snow bin & water tank connection
 > 2,800 l (> 740 gal)

Footbrake and parking brake
 Hydraulically driven and swivelling side brush
 Board guide pulley
 Side mirror, rear
 Front headlights, snow bin headlight, side headlight
 Flashing warning light
 Acoustic signal for reverse drive, snow bin cover
 operation, reverse of the screw conveyors and blade
 exchange
 Proportional water metering
 System for water dosing in curves
 Planing system made of stainless steel
 Constant grinding pressure planing system
 Quick-Change-System for fast blade replacement
 (< 60 seconds)
 2 blades in wooden transport box
 (super-light blade - 3.5 kg (6.6 lbs))
 2 towels
 Scope of delivery-set



suva
CERTIFICATION

In compliance with Suva certification
no. E 7139/1.e



Snow tank volume

4.1 m³ / compacted 5.1 m³
(145 ft³ / compacted 180 ft³)



Water tank volume

1,450 l (383 gal)
or 1,600 l (423 gal)
or 2,200 l (581 gal)



Blade width

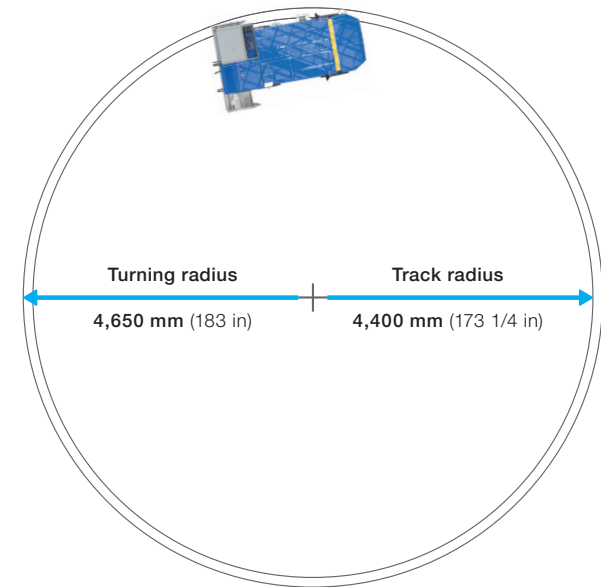
2,300 mm (90 1/2 in)
or 2,500 mm (98 1/2 in)



Fields of operations

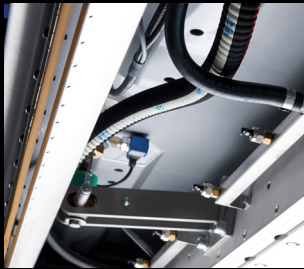
Pro / Heavy duty

DIMENSIONS



OPTIONALS

Wash system



Ice wash system
Multijet



Screw conveyor wash
system vertical



Screw conveyor wash
system horizontal

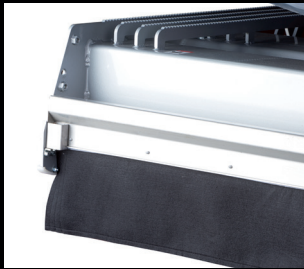


Snow bin
wash system



Wheel wash system
co-steering

Water application



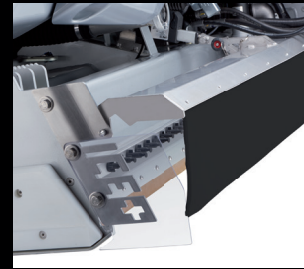
Towel support
standard



Towel lifter
automatic



ICEplus
Water spraying system

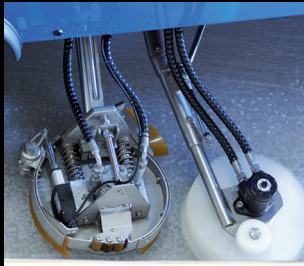


ICEplus Flexi
Water spraying system
with automatic towel lifter



Water sprayer

Dasher board processing



Edger
made of stainless steel,
spring borne with electric
height adjustment

Overview & security



Side mirror
front left



Side mirror
front right



Heated mirrors



Front camera

OPTIONALS

Comfort



Cab heating



Driver's seat heating
Seat pad and backrest



Joystick



Radio with
2x 10 cm speakers



Acquastop valve



LED headlights



Tail lights



RGB underbody
illumination

Personalization



Painting
1 color RAL



Wrapping

Service



Battery trolley



Battery water filling system



Spare wheel 16"



Cross-key



Lifting jack with bar 10t (20 000 lbs)



Tool set



Assembly tool for nozzles ICEplus

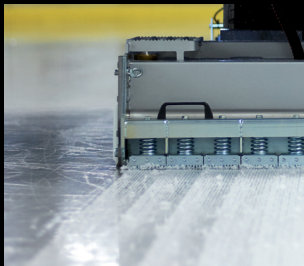


Kit diagnostic cables



Access BMU
Battery-Monitoring-Unit

Attachments for Bavarian Curling



Groove harrow

WM EVO2





OUR COMMITMENT

User friendliness

Through the use of top-quality components together with a well-planned design, maintenance work is extremely simple and is reduced to a minimum.



Quality guarantee

The WM evo² is a product which has been developed, built and assembled in house, from start to finish. Only by doing so can we guarantee top quality and punctual delivery times.

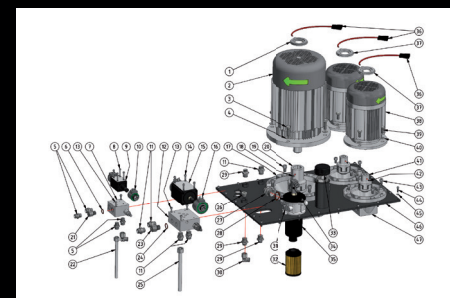


Detailed operating instructions

You can find all information on operation, maintenance and safety in the operating manual.

The right replacement part, every time

Order your spare parts easily and conveniently from our online portal: Our series number and digital image system enable you to find the part you need with just one click.



Service and support

Our well-networked, international team of technicians undergo constant training and will be delighted to help you whenever you require assistance.



Series production

All WM technics vehicles are series-manufactured. We know exactly which parts have been used in each series run, and can deliver the correct spare parts to you at all times. At the same time, a number of optionals can be retrofitted with minimum effort and maximum precision, even years later.

Quality consciousness

From the manufacture of individual parts right through to the final quality-control inspection: Every step of the process is carried out and monitored with the utmost of precision. Each and every member of our staff is well-trained in his specialist field, and carries out all tasks conscientiously. This is a great advantage for our customers, who can be sure of receiving a technologically sophisticated product which has been manufactured to the very highest of quality standards.





www.wm-on-ice.com
Italy

WM ice technics relies on the following distribution partners in North America:



Autoworq
Montreal (Québec)
Phone 1-866-973-1333
www.autoworq.com



LSK Enterprises
Virginia Beach (VA)
Phone 1-757-366-0166
www.lskenterprises.com



Outdooricerinks.com
Strongsville (OH)
Phone 1-440-628-7979
www.outdooricerinks.com



Mobile / Event



Pro / Heavy duty



Compact



evo²